

**Lathyrus odoratus 'Annie B. Gilroy'**

*Old Fashioned Sweet Pea* –

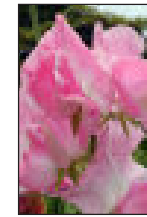
Outstanding heirloom variety features cherry-red flowers with lighter pink wings on vining, sprawling plants—combine with other pink and white sweet peas for a superb informal garden display. Highly scented heirloom variety with masses of small bright blooms dates to 1907. Grows 5 feet tall.



**Lathyrus odoratus 'Old Spice Miss Wilmott'**

*Old Fashioned Sweet Pea* –

Extremely beautiful flowers are deep, glowing orange-pink, showing veins of deeper orange-rose. Rare, strongly scented heirloom variety dates back to 1901 and is named after a great Victorian and Edwardian gardener. Profuse bloomer makes a superb, warmly colored spring display when grown on a trellis, arch, fence, or obelisk. Grows 4-5 feet tall.



**Lathyrus odoratus 'Tara'**

*Spencer Sweet Pea* –

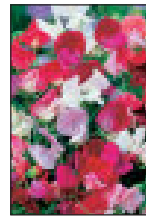
Cheerful waved flowers in bright pink shaded over a clear white background appear on fast-growing vining plants. Let this award-winning variety with sweetly scented, sugar-pink flowers twine through a white-blooming rose bush or silver-leaved shrub for a fragrant and attractive pairing. Grows 4-6 feet tall.



**Lathyrus odoratus 'Anniversary'**

*Spencer Sweet Pea* –

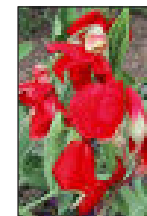
Softly ruffled creamy white flowers enhanced with a gorgeous rose-pink picotee edge bloom throughout the summer on strongly growing, long-stemmed plants that are ideal in the garden or for cutting. Frilly, sweetly scented, show-quality blooms are beautiful in every way. Grows 4-6 feet tall.



**Lathyrus odoratus 'Old Spice Mix'**

*Old Fashioned Sweet Pea* –

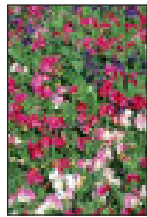
An excellent heirloom collection and the best sweet pea for warmer climates. Colorful mix includes white, cream, pink, rose, scarlet, purple, bicolors, and striped flowers, and the strongly scented blooms will keep coming even as temperatures increase. Strong vines like a trellis, fence, or shrub to climb on. Grows 5-6 feet tall.



**Lathyrus odoratus 'Villa Roma Scarlet'**

*Dwarf Sweet Pea* –

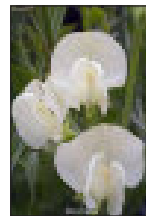
Exciting new bush-type sweet pea with vivid orange-red blooms is ideal for container gardening. Growing just 2 ½ feet tall, 'Villa Roma Carmine' fits perfectly in a patio pot, hanging basket, or window box. Combine with a trailing white lobelia or cushiony white sweet alyssum for a charming and easy-to-maintain container display.



**Lathyrus odoratus 'Bijou Mix'**

*Dwarf Sweet Pea* –

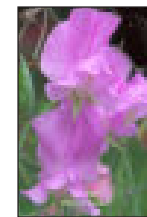
Early-flowering mix produces lightly scented blooms with small wavy petals in a fine color range, including red, salmon, blue, rose, lilac, and pink. Compact, bushy plants grow only 18 inches tall and are ideal for containers, beds, or at the front of borders. 'Bijou' blooms profusely over a long period, with up to 4-5 flowers per stem. If grown well, the stems are just long enough for cutting.



**Lathyrus odoratus 'Old Spice Mrs. Collier'**

*Old Fashioned Sweet Pea* –

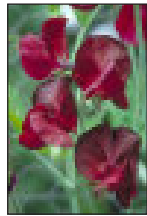
Clear yellow buds open to masses of creamy white blooms with darker, almost primrose-yellow backs—as close as a sweet pea gets to the elusive yellow shade! Very dainty and elegant heirloom variety is clothed in highly perfumed blooms all summer, performing well even in hot weather. Grows 4-6 feet tall.



**Lathyrus odoratus, Winter Elegance 'Lavender'**

*Winter Elegance Sweet Pea* –

Very large flowers in light purple bloom on tall vining plants starting in spring. Softly hued blooms on long strong stems provide early color for the garden as well as lovely flowers for cut arrangements. Provide the support of a trellis, fence, or wires for the nicest cut flowers. Grows 4-6 feet tall.



**Lathyrus odoratus 'Black Diamond'**

*Spencer Sweet Pea* –

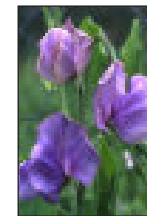
One of the darkest sweet peas available, 'Black Diamond' produces deep velvety maroon blooms in abundance throughout the season. Grow this rich, dark variety along a white picket fence for an informal display with an air of romance. The large, deeply colored flowers with sweet fragrance also are excellent in cut arrangements. Grows 6-7 feet tall.



**Lathyrus odoratus 'Solway Sunset'**

*Spencer Sweet Pea* –

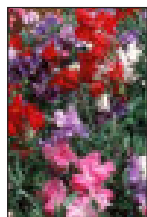
Yellow buds flushed with red open to orange-cerise blooms edged and streaked with white. Distinctive variety has unusually large flowers for a stripe, with good color and strong stems. Interesting coloring and strong fragrance make 'Solway Sunset' an ideal cut flower. Grows 4-6 feet tall.



**Lathyrus odoratus, Winter Elegance 'Mid Blue'**

*Winter Elegance Sweet Pea* –

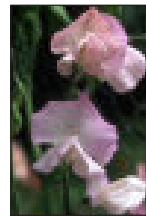
Soft, smoky medium-blue flowers – a new color in the Winter Elegance series, which need only 10 hours of daylight to bloom and appear up to two weeks earlier than most other varieties. Combine with later-flowering sweet peas to ensure a long-lasting display. Grows 6-7 feet tall.



**Lathyrus odoratus 'Explorer Mix'**

*Dwarf Sweet Pea* –

Deep maroon blooms darken to near-black at the edges; the vigorous vining plants with unusual dark blooms stand out in the garden all spring and summer. And the deep color, elegant sheen, and sweet strong fragrance make these sweet peas stand out in a cut arrangement or bouquet. Grows 6-7 feet tall.



**Lathyrus odoratus 'Southbourne'**

*Spencer Sweet Pea* –

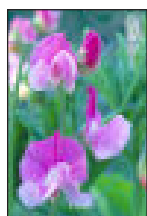
An elegant old favorite in soft rose on attractive gray-green foliage. Each well-scented, slightly waved flower opens salmon pink, with strong rose-pink petals shading to white at the center. Tall-growing vines covered in blossoms are ideal for fences, trellises, twining through other plants. Grows 6-7 feet tall.



**Lathyrus odoratus, Winter Elegance 'Pink Diana'**

*Winter Elegance Sweet Pea* –

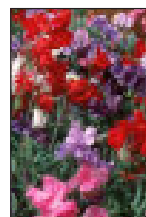
Soft pink flowers with white at their base start blooming very early on long-stemmed plants. Winter Elegance sweet peas are among the first to flower each season, making them an excellent choice where hot weather may reduce summer bloom. Grows 4-6 feet tall.



**Lathyrus odoratus 'Gaiety'**

*Spencer Sweet Pea* –

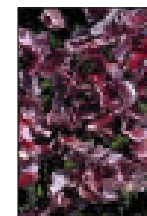
Gorgeous pink and white bicolor flowers appear in profusion all summer, displaying bright rose upper petals over clear white wings. Large, lightly scented blooms are excellent in a cut arrangement or for attracting beneficial bees and hummingbirds to a garden trellis. Grows 5-6 feet tall.



**Lathyrus odoratus 'Supersnoop' Mix**

*Dwarf Sweet Pea* –

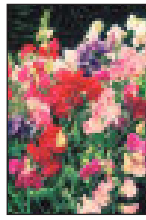
Popular early blooming mixture produces wonderfully scented flowers in scarlet, rose, blue, white, and pink shades, clustered tightly on lush deep green foliage. Sturdy, shorter, bushy plants need little or no support; ideal for colorful low hedging in beds, borders, or along walkways. Grows 24-30" tall.



**Lathyrus odoratus 'Wiltshire Ripple'**

*Spencer Sweet Pea* –

Dramatic blooms are striped and flushed in rich chocolate, maroon and claret on a creamy white background. Recently rediscovered variety has 3 to 4 sweetly fragrant, well-waved flowers on each long sturdy stem. Tall climbing plants covered in outstanding, uniquely colored blooms are a real eye-catcher on a trellis or fence. Grows 6-7 feet tall.



**Lathyrus odoratus 'Knee High Mix'**

*Dwarf Sweet Pea* –

Semi-dwarf variety blooms profusely in shades of cream, reddish-purple, pink, deep red, violet, and purple. Flowers are large, up to 2" across, wavy, and barely scented. If given some support, vines can grow up to 4 feet tall and blooms may be used as cut flowers. Or let the vines amble across the ground as a bedding plant.



**Lathyrus odoratus 'Lavender Melody'**

*Spencer Sweet Pea* –

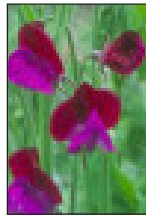
Delectable blooms in two shades of lavender! Rich rosy lavender upper petals hover over the pale purple-lavender wings that are a slightly darker shade on the reverse. Lightly scented flowers love to bloom in early summer on trellises, fences, walls, or in a large pot. Grows 4-6 feet tall.



**Lathyrus odoratus 'Mammoth' series**

*Old Fashioned Sweet Pea* –

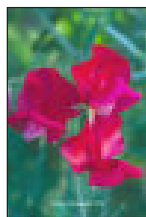
Early-blooming series is popular for its early spring color and its large, good-quality flowers on long stems. Smooth-petaled blooms appear in shades of crimson, lavender, salmon, deep rose, navy blue, rose pink, and salmon pink on attractive, tall climbing vines. Grows 5-6 feet tall.



**Lathyrus odoratus 'Old Spice Cupani'**

*Old Fashioned Sweet Pea* –

Maroon and mauve bicolor is the original sweet pea! Fabulously scented heirloom was first cultivated in Sicily in the 1690s. Heat tolerant variety produces strongly scented flowers with vivid deep maroon upper petals and bright mauve wings on bushy plants. Grows 5-6 feet tall.



**Lathyrus odoratus 'Old Spice King Edward VII'**

*Old Fashioned Sweet Pea* –

A rich crimson sweet pea that has been called the best of its color. Vigorous, tall vines create quite a dramatic display on a trellis or fence, with 3 or 4 large, bright red blooms on each stem. The very finely shaped flowers are also exquisite in cut arrangements. Grows 4-6 feet tall.



**Lathyrus odoratus 'Old Spice Lord Nelson'**

*Old Fashioned Sweet Pea* –

Magnificent deeply colored, slightly waved two-tone flowers appear 3 or 4 per stem. Dusky mauve upper petals have blue overtones and deep indigo backs; wings are more blue with a lighter blue reverse. Well-scented flowers are good for cutting. Grows 4-6 feet tall.

## Sweet Pea Types

**SPENCER SWEET PEA** – Ruffled blooms, the largest flowers, & long stems make Spencer varieties the best sweet peas for cut arrangements

**OLD-FASHIONED SWEET PEA** – Antique sweet peas popular in the early 1900s, these varieties keep blooming even in hot summer weather

**CUTHBERTSON SWEET PEA** – An extremely early-flowering series with good heat resistance. Less showy than the Spencers, but also good for cutting

**DWARF SWEET PEA** – Low-growing cultivars can be grown without supports. Perfect at the front of borders or to fill window boxes and containers.

**FLAKE SWEET PEA** – Distinctive group of sweet peas; the boldly patterned blooms are heavily streaked in a dark color against a lighter background

**WINTER ELEGANCE SWEET PEA** – Developed to flower early, these sweet peas are intended for areas where summers are too hot for other types.

**INDIAN PEA** – Unusual white form of the species, which is used around the world as animal fodder, green manure, and homeopathic medicine.



Cottage Grove, Oregon  
www.loghouseplants.com

